



## Editorial

A perspective for an integrated EU Maritime Policy

A European conference on "The Future Maritime Policy of the EU: A European Vision for Oceans and Seas" was held in Bremen from 2 to 4 May 2007. It was the key contribution by the German EU Presidency within the consultation process that the Commission had initiated in June 2006 with the publication of its Green Paper on the future maritime policy of the EU.

The aim of the Green Paper has been to make a contribution, in line with the Lisbon Agenda, to promoting growth and employment in the maritime sector and, alongside, to protecting the maritime environment. What is specific and novel in this context is the holistic approach that has been adopted. To date, the policies of the European Union in the fields of maritime shipping, seaborne trade, shipping and shipbuilding, near-coastal sea and land areas, offshore energy development and exploitation, fisheries, and the protection of the marine environment had been developed separately, notwithstanding the possibility that, for example, a regulation dealing with an aspect of the sea proper might simultaneously have effects on the shore-side environment and on the lives of the people dwelling by the shore; that it might trigger some technological innovation in navigation; that it might have an effect on the attractiveness of a given location for tourism or even for the economy as a whole and, thus, might influence the job situation in a wide area.

By contrast, the Commission's objective now is to develop, in co-operation with EU Member States, the framework for a cross-sector and polydisciplinary maritime policy that will take into account, at the earliest opportunity, all interests involved and will balance them against each other, so that a truly integrated view can be achieved. The Green Paper constitutes a first and major step in this direction in that it presents in one paper a digest of the various policies, subjects, and insights related to the seas and the coasts, suggests possible objectives, and puts detailed relevant questions to the interested public. Any citizen and organization is invited to submit his,

her, respectively, ist comments direct to the Commission by the end of June 2007.

The great importance of the subject was highlighted at the Bremen Conference by the presence of numerous top-ranking political personalities, including German Federal Chancellor, Angela Merkel, EU Commission President, José Manuel Barroso, Vice-President and Transport Commissioner, Jacques Barrot, Fisheries Commissioner, Joe Borg, and the German Federal Minister of Transport, Building, and Urban Affairs, Wolfgang Tiefensee as well as by the participation of more than 500 guests from all over Europe. With contributions from policymakers, representatives of the business and science communities and those of the civil society, the double goal of the European conference in Bremen was, on the one hand, to provide an overview of the current status of the consultation process scheduled for completion by the end of this month while, on the other hand, identifying a perspective on the future of a common maritime policy in Europe.

The "Bremen Declaration on the Future Maritime Policy of the EU", which was adopted at the end of the Conference, contains a set of consensual conclusions on some of the key fields of an integrated maritime policy, such as employment and competitiveness; a joint responsibility for the seas; research and innovation; and improving life on the coastline. This Declaration makes a substantial contribution to the debate initiated through the publication of the Green Paper.

Further important waypoints may now be expected to emerge in the second half of 2007. The Commission has announced that it will publish two major papers on 10 October: the first will be a look back on the consultation process, the second a plan for action ("blue paper"), in which the Commission will propose a number of concrete activities and legal instruments. Portugal, the next Presidency, will continue to work on the subject and will organize further high-profile conferences in the second half of the year.

The German Government will continue making every effort to accompany in a sense of constructive co-operation and, where necessary, constructive

criticism, this ongoing process, which may still be in its early stage but which has now definitely gained momentum.

Readers may wish to visit one or more of the following web-sites: <http://www.bmvbs.de/en/EU-Council-Presidency/Programme-of-work-,2710/Maritime-Policy.htm>

This site, among other things, gives an overview of the priorities addressed in the Green Paper.

[http://ec.europa.eu/maritimeaffairs/policy\\_en.html#com](http://ec.europa.eu/maritimeaffairs/policy_en.html#com)

Dr. Frank Castenholz | Bundesministerium für Verkehr, Bau und Stadtentwicklung | Invalidenstr. 44 | 10115 Berlin frank.castenholz@bmvbs.bund.de

## German translation of the metadata standard ISO 19115

> Markus Seifert

Head of the Geodata Infrastructure Office Bavaria, State Department for Surveying and Spatial Information, Bavaria

The metadata working group (AK Metadaten) is currently involved in the development and updating of a service for the transfer of meta data (CSW), but also in stipulating the contents of the metadata elements that can be transferred using this service. A German translation of the ISO standard which was previously only published in English is of great assistance in obtaining a fundamental understanding of what are in some cases highly complex interrelationships. However, various German-speaking bodies involved in implementing the ISO standard in metadata information systems (e.g. NOKIS, PortalU, AdV, KOGIS) have frequently found differing translations and interpretations for the same elements, making it difficult or even impossible to proceed with intersectoral metadata research in the context of the German Spatial Data Infrastructure GDI-DE.

The translations and interpretations for German-speaking countries are therefore being harmonized along the lines of uniform use. This work is currently being carried out by a sub-study group of the metadata working group with participation of metadata experts from several specialist departments in Germany and Switzerland. The objective is to obtain a GDI-DE application profile for metadata, with a harmonized German translation and instructions for implementation in a metadata information network.

The current work status and on-going planning deadlines can be found on the website [www.nokis.org/AG-ISO-UEbersetzung.208.0.html](http://www.nokis.org/AG-ISO-UEbersetzung.208.0.html)

On completing the translation draft, the plan is to adopt the German version of ISO19115 in a further group of metadata experts.

## Application procedure for third-party funded projects of BMBF<sup>1</sup> in the KFKI

> Dr.-Ing. Rainer Lehfeldt

> BD Frank Thorenz

German Coastal Engineering Research Council (KFKI)

1. The subject of the application must correspond to the research concept for the Coastal Engineering Research Council, possibly giving special consideration to the current focal issues of research funding.
2. The project idea must be discussed in advance with the Head of Coastal Research at the KFKI.
3. A draft of the project must be elaborated (hand-out).
4. This is sent to the Head of Coastal Research.
5. Presentation of the project draft and discussion of the planned work at the six-monthly consultant meeting held by the Head of Coastal Research.
6. Presentation of the project draft by the Head of Coastal Research to the six-monthly meeting of the Coastal Engineering Research Council.
7. The leader of the planned project is informed by the Head of Coastal Research about the Council's vote and how to proceed from here.
- 7a. Information about possibly necessary modifications or, where applicable, setting up a working group for in-depth discussion of the contents presented in the draft.
- 7b. Discussion of the modified project draft with the Head of Coastal Research.
8. Submission of the agreed draft to the Project Management Jülich (PTJ), business unit MGS; Rostock.
9. Registration of the draft and allocation of a provisional funding code; request from the Project Management Jülich to complete a standardized proposal (corresponding guidelines can be found on the KFKI website).
10. Submission of the funding request to the project organization; copy to the Head of Coastal Research.

General information:

- After the project has been approved by the BMBF: project information sent to the Head Office to be included in the KFKI project database.
- Meta data made available for data documentation in NOKIS.
- At the end of the project: handover of the data to the Head Office for permanent archiving.

<sup>1</sup> BMBF: German Ministry for Education and Research

## New Director for the Franzius Institute

On 1 March 2007, PD Dr.-Ing. habil. Torsten Schlurmann was appointed Professor and Director of the Franzius Institute

> PD Dr.-Ing. habil. Torsten Schlurmann

Franzius-Institut, Leibniz-Universität Hannover

After his degree in civil engineering at Bergisch University Wuppertal (1991-1995) where he specialized in hydraulic and coastal engineering, initially Dr. Schlurmann worked as a research assistant, subsequently obtaining his doctorate (1999) with a thesis on "Non-linear interaction process of multichromatic waves and the propagation characteristics of freak waves", supervised by Professor Kaldenhoff. He subsequently worked for six years as chief engineer. During this period he was successfully involved in several research projects and numerous-extended research trips abroad, including among others the Indian Institute of Technology Madras (IITM). Between 2002 and 2003, Dr. Schlurmann was provisional director of teaching and research in hydraulic engineering and water management at the BUW.

His professorial thesis entitled "Time-frequency analysis methods in Hydrology and Hydraulic Engineering" supervised by Professor Oumeraci, Professor Sobey and Professor Schlenkhoff was submitted in spring 2005, and he was subsequently awarded the lecturer's qualification "Venia Legendi" for hydraulic engineering and water management, before moving to the Institute for Environment and Human Security (UNU-EHS) at the United Nations University in Bonn. Here Dr. Schlurmann was involved in setting up and, in particular, networking the currently new scientific facility of the UNU in Tokyo with Germany, supporting the Director of the UNU-EHS, Professor J. Bogardi, in establishing a comprehensive interdisciplinary network between government representatives, scientific institutions of the United



Nations and international research institutions. During this time, he initiated and led several international interdisciplinary projects; among others, he was and still is involved in the major consortium project funded by the BMBF in the context of the tsunami early warning system in the Indian Ocean (GITEWS). In this context he is also the German representative in the UNESCO IOC working group "Risk and vulnerability estimation". Even after changing to Leibniz University Hanover, Dr. Schlurmann continues to work as a consultant for the UNU-EHS and is involved on behalf of the above mentioned institute in a research project at Leibniz University Hanover on ascertaining and evaluating vulnerability indicators in coastal zones.

The Franzius Institut for Hydraulic Engineering and Coastal Engineering at Leibniz University Hanover was founded in 1914 and is an established national and international address for scientific tasks related to hydraulics, river engineering, waterways management, port planning, coastal defences, dike monitoring, flood and risk management, environmental effects of hydraulic engineering works, tidal water engineering and offshore engineering. The Franzius Institute will continue with this wide range of tasks under the directorship of Dr. Schlurmann,

with the addition of new tasks looking in particular at interdisciplinary networks and consortium projects when it comes to integrated coastal zone management (ICZM), risk and vulnerability research in coastal zones and also technical cooperation with developing countries. More information about the Franzius Institute and Dr. Schlurmann is available from the following contact addresses:

Univ.-Prof. Dr.-Ing. habil. Torsten Schlurmann  
Franzius Institute for Hydraulic Engineering and Coastal Engineering  
Leibniz University Hanover  
Nienburger Straße 4 | D-30167 Hanover  
Tel.: +49 (0)511 762-2572  
Fax: +49 (0)511 762-4002  
E-mail: schlurmann@fi.uni-hannover.de  
Internet: <http://www.fi.uni-hannover.de>

## "mbes2xml" - working with multi-beam echo sounder data

>Lars Stederoth

Waterways and Shipping Authority (WSA), Bremen

### Introduction

Given the ever growing demand for quality assured data, the Waterways and Shipping Administration (WSV) also makes every effort to ensure that the data generated in its waterways surveys are quality assured. This entails checking the quality not only of the measured data but also the descriptive data (metadata). When it comes to preparing wide-scale measured data, the WSV uses the HyDAP evaluation program developed by the Federal Institute of Hydrology. The HyDAP produces files in the mbes format (multi-beam echo sounder format). This is a binary, proprietary file format consisting of three blocks. The first block, the so-called header, contains all meta information such as file name, federal waterways ID, ship's name, etc. The second block contains the measured data, and the third block stores the process metadata describing the course of analysis and the measurement quality. As it has not been possible up to now for the data generator to provide quality assured metadata contained in mbes, in mid 2006 WSD Nordwest (Aurich) commissioned smileconsult GmbH (Hamburg) to develop software for visualization of these metadata with plausibility checks and correction features. In addition, in order to cope in future with various metadata information systems such as Geoportal-Bund, UDK, NOKIS, etc., it should also be possible to convert the metadata into an ISO-compatible format. The metadata scheme developed in the NOKIS research project appears to be appropriate for this purpose.

### Description of the software

Version 1.0 of the software "mbes2xml" was ready for testing by early December 2006. The clearly structured user interface and nearly self-explanatory handling permit a quick and easy introduction to the program. The tool surface is broken down essentially into two partial areas. The upper screen section shows the metadata in tables for the sounding data in

the selected directory. The lower section of the screen shows the metadata editor for viewing, modifying and correcting the metadata for a selected dataset (see Fig. 1)

Together with the metadata, it is also possible to view

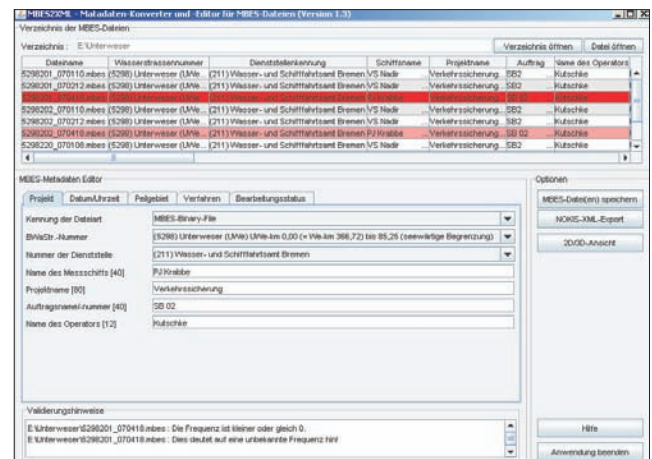


Figure 1:  
User interface "mbes2xml"

and inspect the measured data using an additional application, based on the GISMO viewer, in a 2D and 3D view (see Fig. 2).

The application "mbes2xml" can access both individual mbes files and also whole directories. Incorrect or incomplete metadata sets are highlighted with a corresponding warning or correction information. The metadata are then corrected in the editor. Some

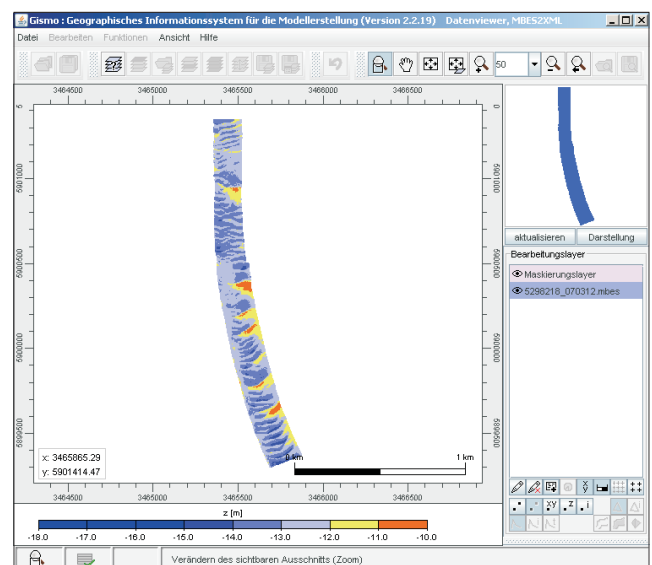


Figure 2:  
"GISMO-Viewer"

correction boxes (e.g. waterways ID) already show the correct values as defaults for selection in drop-down boxes. Other metadata (e.g. ship's name) are entered manually in the correction box.

One major advantage of "mbes2xml" is that it processes several metadata sets at the same time. It is thus possible to correct several files with the same errors in one go. The revised files can then be saved again using the mbes format. This overwrites the old mbes file; the original status is saved in a backup file.

#### Outlook

Up to now, the current version of "mbes2xml" is only capable of saving the corrected meta information to an mbes file. But as described at the start, it should be possible to convert the metadata to an ISO-compatible NOKIS-XML. This also includes automated generation of a surrounding polygon and a preview picture. In addition, it should also be possible to "refine" the existing metadata by adding further information from pre-defined templates. Export of the ISO-compatible NOKIS-XML can take place using various procedures.

On the one hand, the NOKIS-XML could be exported as an external file. On the other hand, it is also conceivable for the NOKIS-compatible XML to be embedded directly in the mbes file.

#### Summary

"mbes2xml" gives the user an efficient tool for quality assured processing and exporting of the metadata contained in the mbes files. At the moment, this tool is used in the surveying offices of WSD Nord (Kiel) and Nordwest (Aurich) for field data processing and export to the long-term bathymetry data archive (PDBK).

## Eurotop

> Dr.-Ing. Holger Schüttrumpf

Federal Waterways Engineering and Research Institute (BAW)

#### European Wave Overtopping Manual

When designing flood defences such as dikes and seawalls, one of the prime parameters for defining the crest height of the structure is to ascertain wave

overtopping, in addition to the main water level. Uncertainties in ascertaining the main water levels and corresponding wave parameters cannot rule out the possibility of wave overtopping, and have therefore been featured in recent decades in numerous national and international research projects. In 2005, the Environmental Agency (United Kingdom), Rijkswaterstaat (Netherlands) and the Coastal Engineering Research Council (Germany) agreed to integrate the latest research results in a joint European Overtopping Manual (Eurotop), with the following aims in mind:

- Synthesis of the current know-how in wave run-up and wave overtopping, and elaborating recommendations for practical implementation
- Standard, harmonized manual on wave run-up and wave overtopping for various coastal structures (dikes, breakwaters, seawalls, etc.)
- Direct implementation of the manual in a web-based software, with release of further computing programs (Neuronal Network, Clash Database, PC Overtop) as part of a calculation tool.

In the meantime, the European Overtopping Manual (manual and calculation tool) has been completed and will be made available free of charge for downloading on the project's website

[www.overtoppingmanual.com](http://www.overtoppingmanual.com).

In addition, the text will also be published in a special edition of "Die Küste" (issue 73) in autumn 2007. At the same time, launch events will be held in the participating countries, with invitations extended to interested colleagues.

The first meeting on 6 June 2007 in the Institution of Civil Engineers in London was attended by more than 75 colleagues from the United Kingdom. As the event was fully booked already more than two weeks in advance, plans are currently being made for a second event in London. A similar event is to be held next spring in Hamburg as part of a joint HTG/KFKI meeting. Announcements will be made in the corresponding publications of both societies.

## 31st International Conference on Coastal Engineering - ICCE 2008

Deadline for abstracts: 15 Juli 2007

> Dr.-Ing. Holger Schüttrumpf

Federal Waterways Engineering and Research Institute (BAW)

Planning work for the 31st International Conference on Coastal Engineering in Hamburg from 31 August to 5 September 2008 are now approaching an initial decisive phase. The deadline for submitting extracts expires on 15 July 2007. All national colleagues are asked to participate in the Call for Papers and submit an abstract of an intended conference paper in English on one of the main topic areas being dealt with at the ICCE 2008:

- Coastal and estuarine processes and structures
- Ports and waterways
- Coastal risks and
- Development of the coastal zone.

The deadline for submitting abstracts using the electronic .pdf format expires on 15 July 2007. To this end, the title of the abstract, conference topic and information on the author should be placed on the website

<http://chl.erdc.usace.army.mil/chlconf/>.

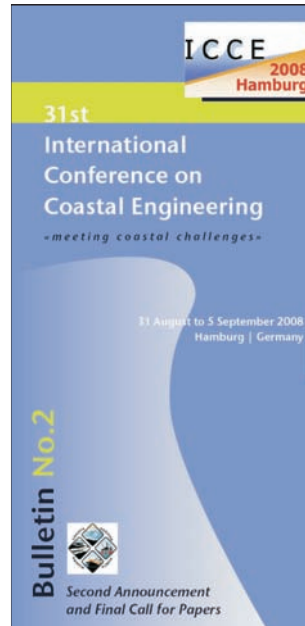
After the data have been submitted, each abstract will automatically be allocated a reference number. The abstract itself should then be submitted together with this number to the e-mail address:

[icce@erdc.usace.army.mil](mailto:icce@erdc.usace.army.mil)

The abstract must not be longer than 2 pages and must not exceed an electronic size of 1 MB. Further information on submitting abstracts can be found in Bulletin No. 2 which is available for downloading on the conference website

<http://icce2008.hamburg.baw.de>

The conference website can also be used to register in a mailing list to obtain further information about the conference. For additional information, you can also approach the local organizing committee.



A special invitation is being extended in particular to companies in the building industry, consulting firms etc. to participate with their special contributions in the conference. Here the conference also offers exhibition and sponsoring possibilities for presentation of products, ideas and services to an international audience of colleagues. Interested companies are asked again to contact the local organizing committee.

Dr.-Ing. Holger Schüttrumpf

Federal Waterways Engineering and Research Institute – Hamburg Office | Wedeler Landstr. 157 | 22559 Hamburg

contact: [schuettrumpf@hamburg.baw.de](mailto:schuettrumpf@hamburg.baw.de)

## ENCORA - a European platform for networking in Integrated Coastal Zone Management

> Dr. Clivia Häse

GKSS Research Center, Institute for Coastal Research / Encora

ENCORA is an EU project to promote networking activities in integrated coastal zone management (ICZM). ENCORA addresses experts from science, practice and the authorities. The aim is to enhance national networking among these groups and to facilitate networking with possible international partners in the EU. To this end, ENCORA provides various service functions on its internet portal. These include a contact search for joint (EU) applications, a reference work on integrated coastal zone management in Wikimedia format (coastal Wiki), an exchange programme for young scientists, a pan-EU contact database, a forum for information transfer and other search functions. For more information, please go to

<http://www.eucc-d.de/plugins/encora>  
[www.encora.eu](http://www.encora.eu).

## News from the head office

### > Dr.-Ing. Rainer Lehfeldt

German Coastal Engineering Research Council (KFKI)

#### Staff news

Since 1 January 2007, Mrs. Michaela Stiller has taken up the post of Office Secretary on a two-year contract. Mrs. Stiller works part-time and her outstanding IT skills make a welcome contribution to supporting the KFKI website and updating the corresponding databases.



#### Design news

The newsletter "KFKI aktuell 1/2007" is appearing for the first time in a new layout and with the new KFKI logo. The website [kfi.baw.de](http://kfi.baw.de) is also being upgraded in the summer and will present its proven range of information with a new look.

#### "Die Küste"

Issue 63 (2001) *Global Storm Surges: Theory, Observations and Applications* with a current overview of storm surges and storm surge models can be purchased with immediate effect at a special price of €5 from the Head Office. This is the updated version of the classic work originally written by Dr. Tad Murty in 1984 "Storm Surges - Meteorological Ocean Tides". *Global Storm Surges* is a comprehensive reference work on storm surges and is ideal particularly as background material for lectures.

Issue 65, (EAK 2002) *Recommendations for Coastal Structures*, is out of print. A corrected reprint of this issue will be published this summer to meet the great demand particularly from universities.

#### Promoting young scientists

Young scientists can apply to the KFKI for allowances for conference trips.

As a rule, allowances are paid for up to 50% of the receipted costs (conference fee, travelling expenses, and accommodation). In turn, a brief report is expected on the event being attended which will then be published in DIE KÜSTE. The application for travelling expense allowances must be submitted to KFKI as soon as an abstract is submitted to a conference. The Council meets twice a year to discuss the submitted applications. Applications that are not

submitted in time will not be considered.

#### ICCE conference papers

The Proceedings for the International Conference on Coastal Engineering 2002 in Cardiff, 2004 in Lissabon and 2006 in San Diego are available in the KFKI library. The contents of the volumes can be viewed on the KFKI website for general guidance.

## NOKIS workshop

### > Dr.-Ing. Rainer Lehfeldt

Federal Waterways Engineering and Research Institute (BAW), Hamburg

### > Dr. Hans-Christian Reimers

State Department for Nature and the Environment (LANU), Flintbek

This year's NOKIS workshop was held on 19 and 20 June in the State Department for Nature and the Environment (LANU) in Flintbek and was attended by about 30 experts from numerous Federal and State departments responsible for information systems and data management. The NOKIS reports focused primarily on tools for generating metadata, exemplary services for visualization and processing of data researched and found via metadata. Other major topics included work on the gazetteer for the coastal zone, which links place names with coordinates, thus permitting a map-based searching, as well as metadata generation in monitoring.

As in the previous workshops, here again discussions looked at the use of other information systems. This included the interaction of Portal U and NOKIS, moving from metadata to data illustrated by the agricultural and environmental atlas of the state of Schleswig-Holstein, the structure of the spatial data infrastructure at BSH and the coastal defence information system in ALR Husum as an instrument of integrated coastal defence management.

The metadata stocks verified with NOKIS are growing considerably. Meanwhile NOKIS is the second largest provider of metadata for the Federal spatial data-portal, alongside the PortalU.

NOKIS [www.nokis.org](http://www.nokis.org)

German environmental portal [www.portalu.de](http://www.portalu.de)

Federal spatial portal

<http://geoportal.bkg.bund.de>

## Events

September 16-19, 2007 HTG Kongress 2007, Internationales Congress Center, Dresden  
info: [www.htg-online.de](http://www.htg-online.de)

September 20, 2007 BAW/BfG Kolloquium - Wasserstraßen: Verkehrsweg und Lebensraum in der Kulturlandschaft, BAW, Karlsruhe  
info: <http://www.baw.de/vip/veranstaltungen1.php.html>

September 24, 2007 Hochwasservorhersage durch mobile Hochwasserschutzsysteme, Dresden  
[www.dwa.de](http://www.dwa.de)

September 25-28, 2007 INTERCOH, International Conference on Cohesive Sediment, Brest, France  
info: <http://www.intercoh.com>

October 2-5, 2007 The Oceans in the Earth System, Universität Bremen  
info: [www.g-v.de](http://www.g-v.de)

October 8-9, 2007 Hochwasserschutztagung: Fünf Jahre nach der Flut, Internationales Congress Center, Dresden  
info: [www.iwd.tu-dresden.de](http://www.iwd.tu-dresden.de)

October 10, 2007 KFKI -Statusseminar, Deutsches Schifffahrtsmuseum, Bremerhaven  
info: <http://kfki.baw.de>

October 17, 2007 Aufbau einer Geodateninfrastruktur der WSV, BAW, Illmenau  
info: <http://www.baw.de/vip/veranstaltungen1.php.html>

November 8, 2007 Ausbau der Seeschifffahrtsstraßen Weser und Elbe, BAW, Hamburg  
info: [www.baw.de](http://www.baw.de)

November 15, 2007 Aktuelle geotechnische Fragestellungen im Verkehrswasserbau, HCC (Hannover-Congress-Centrum), Hannover  
info: <http://www.baw.de/vip/veranstaltungen1.php.html>

February 24-28, 2008 COPEDEC VII - 7th International Conference on Coastal and Port Engineering in Developing Countries, Dubai, United Arab Emirates  
info: [www.pianc-copedecdubai.com](http://www.pianc-copedecdubai.com)

August 31 to September 5, 2008 ICCE 2008: 31st International Conference on Coastal Engineering, CCH (Hamburg Congress Centre), Hamburg  
info: [icce2008.hamburg.baw.de](http://icce2008.hamburg.baw.de)

September 8-12, 2008 ICHE-2008: 8th International Conference on Hydro-Science and Engineering, Nagoya, Japan  
contact: [ttsujimoto@genv.nagoya-u.ac.jp](mailto:ttsujimoto@genv.nagoya-u.ac.jp)

## Imprint

German Coastal Engineering Research Council (KFKI)  
c/o Federal Waterways Engineering and Research Institute (BAW)  
Wedeler Landstrasse 157  
22559 Hamburg, Germany

● Head Office  
t +49 (0) 40-81908-392  
f +49 (0) 40-81908-578  
[kfki-sekretariat@baw.de](mailto:kfki-sekretariat@baw.de)  
<http://kfki.baw.de>

● Scientific Library  
t +49 (0) 40-81908-378  
f +49 (0) 40-81908-578  
[kfki-bibliothek@baw.de](mailto:kfki-bibliothek@baw.de)  
webOPAC <http://kfki.baw.de/OPAC>

English translation by Jacqueline Rohmann